

WTBN RANGE 4 SOP

RANGE DESCRIPTION

Range 4 is an active, small arms, live-fire known distance range located at Grid 88046766 and is accessible from MCB-4.

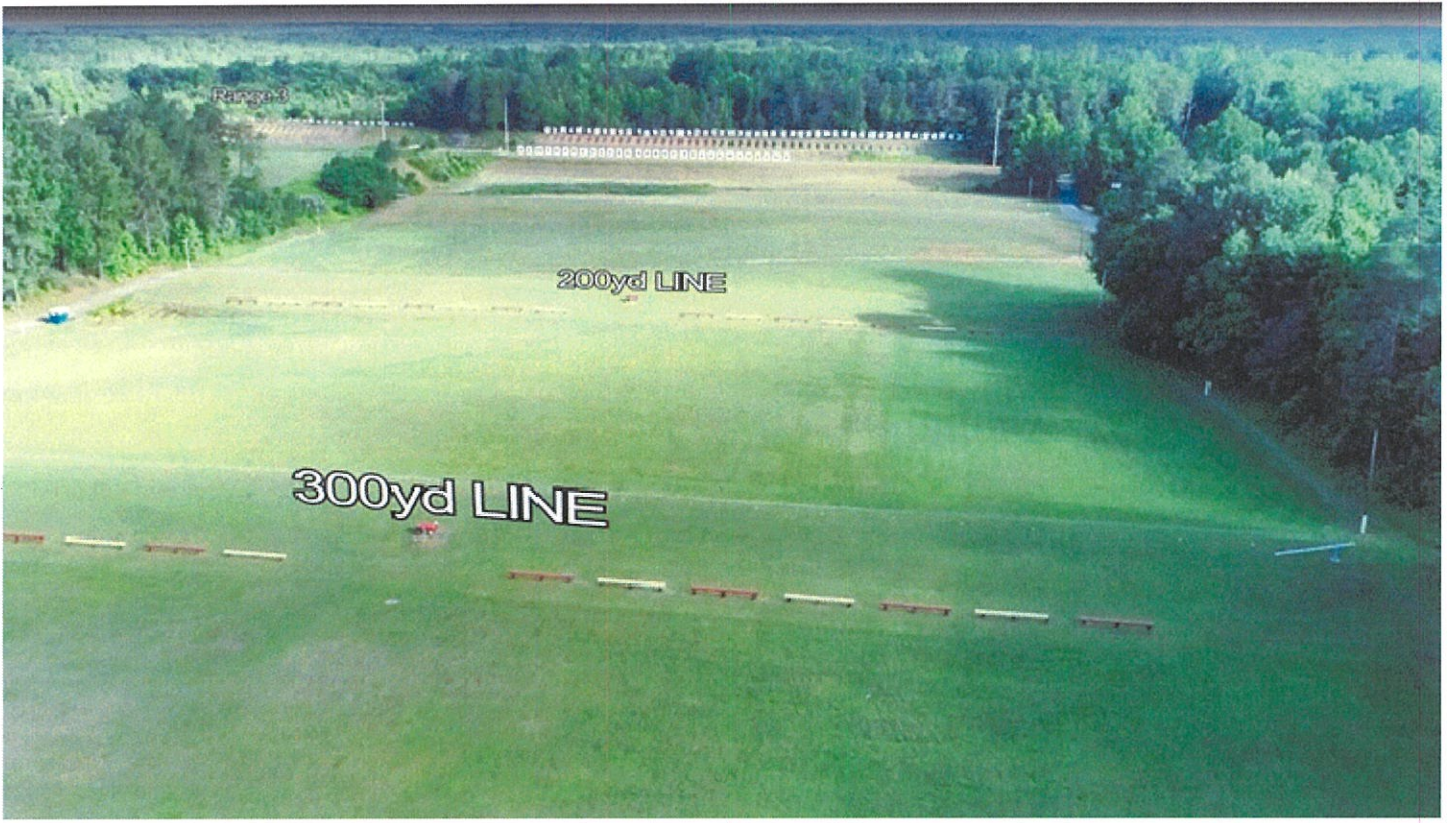
Primary Use: To support execution of Scout Sniper Instruction, Competitive Marksmanship Training for The Marine Corps Shooting Teams, and known distance marksmanship training. Range 4 has 50 stationary targets in the pit area that can be fired upon from 100 to 1000 yards. There are two distinct "Operating Boxes" (Op-box) for the Trackless Mobile Infantry Targets (TMITs) available to augment training. TMIT Op-Boxes are capable of Cross-Fire with restrictions. See Figures 1, 2, 3, and 4.

Priority of use: Weapons Training Bn.

NOTE: DOWN RANGE MOVEMENT INTO THE IMPACT AREA (BEYOND THE IMPACT BERM) IS STRICTLY PROHIBITED. ALL OTHER MOVEMENT INTO THE PIT AREA CONFLICTS WITH RANGE 3 AND PISTOL RANGES AND MUST BE CLOSELY COORDINATED WITH WTBN S-3/OOD. CROSSING RANGE 4 TO ACCESS PITS AND CIRCUMVENTING THE CHECK POINT 7 GATE IS PROHIBITED.

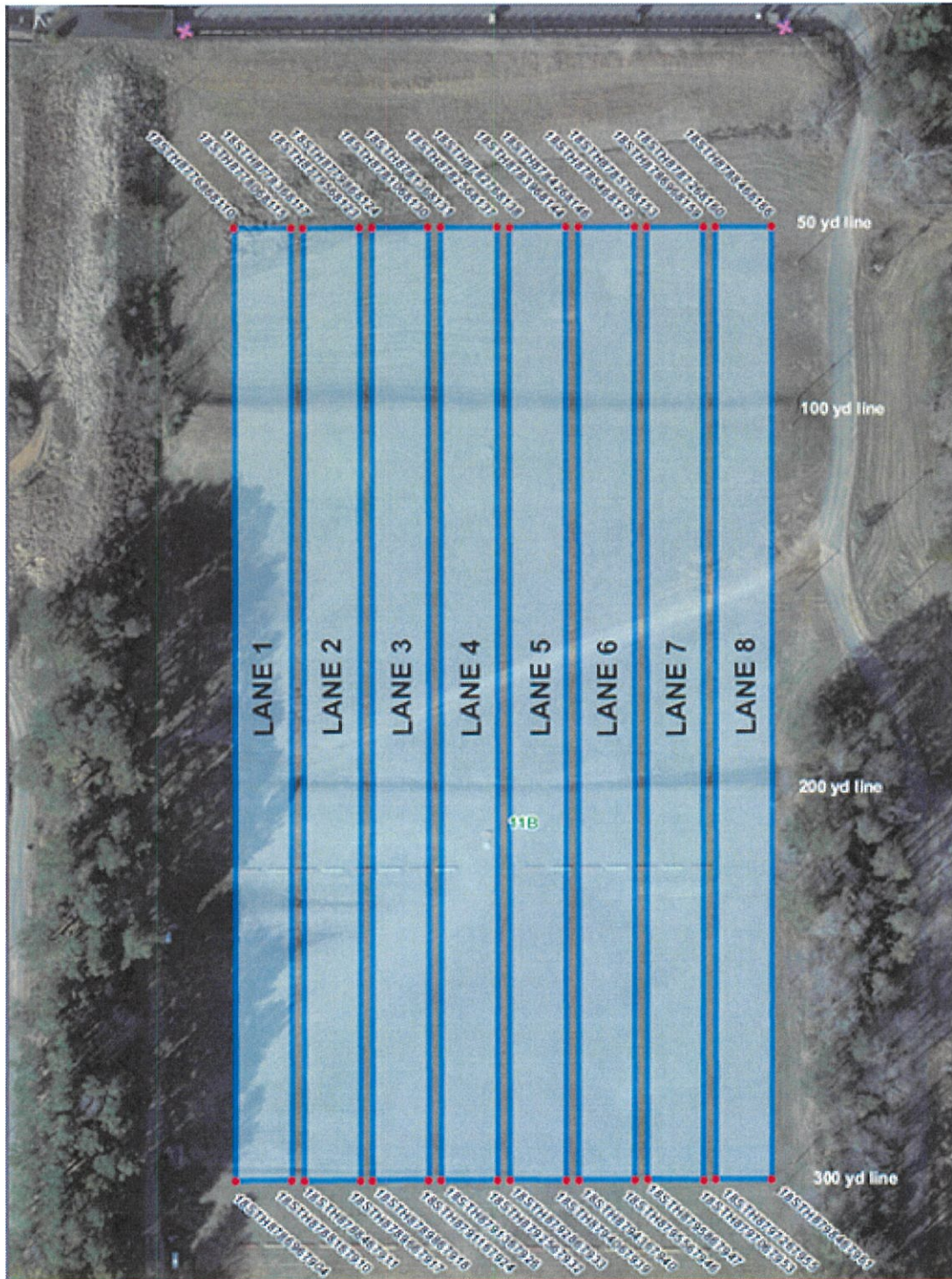


WTBN Range 4





TRACKLESS MOBILE INFANTRY TARGET (TMIT) OPERATING BOX-1

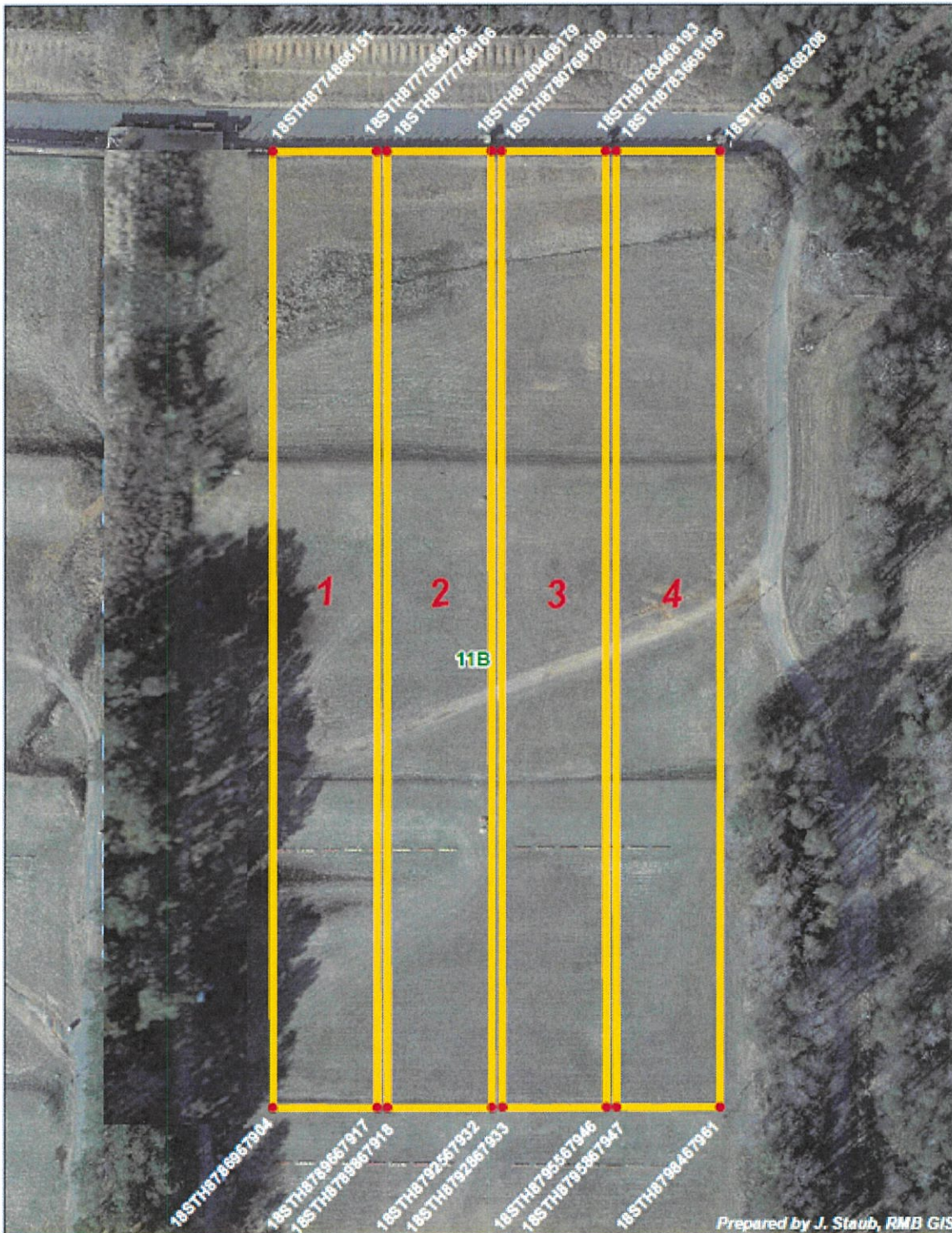


TMIT OP-BOX-1

- SHOOTERS MUST ENGAGE TMITS FROM THE CENTER OF EACH RESPECTIVE LANE ONLY.
- CENTER OF EACH LANE IS REFERENCED BY A KD TARGET NUMBER BOARD.
- CENTERS: L1-TGT 6, L2-TGT 12, L3-TGT 18, L4-TGT 24, L5-TGT 30, L6-TGT 36, L7-TGT 42, L8-TGT 48
- THIS IS THE ONLY AREA OF THE RANGE WHERE CROSSFIRE IS AUTHORIZED.
- CROSSFIRE IS LIMITED TO THE TMITS IN THAT LANE ONLY.
- CROSSFIRE IN MULTIPLE LANES IS PROHIBITED.
- TMITS ARE AUTHORIZED TO MOVE IN ANY SCENARIO THE TERRAIN ALLOWS INSIDE EACH LANE ONLY.
- USE OF PISTOLS IS NOT AUTHORIZED FOR CROSSFIRE.
- MINIMUM ENGAGEMENT DISTANCES MUST BE ADHERED TO.

Figure-1

TRACKLESS MOBILE INFANTRY TARGET (TMIT) OPERATING BOX-2

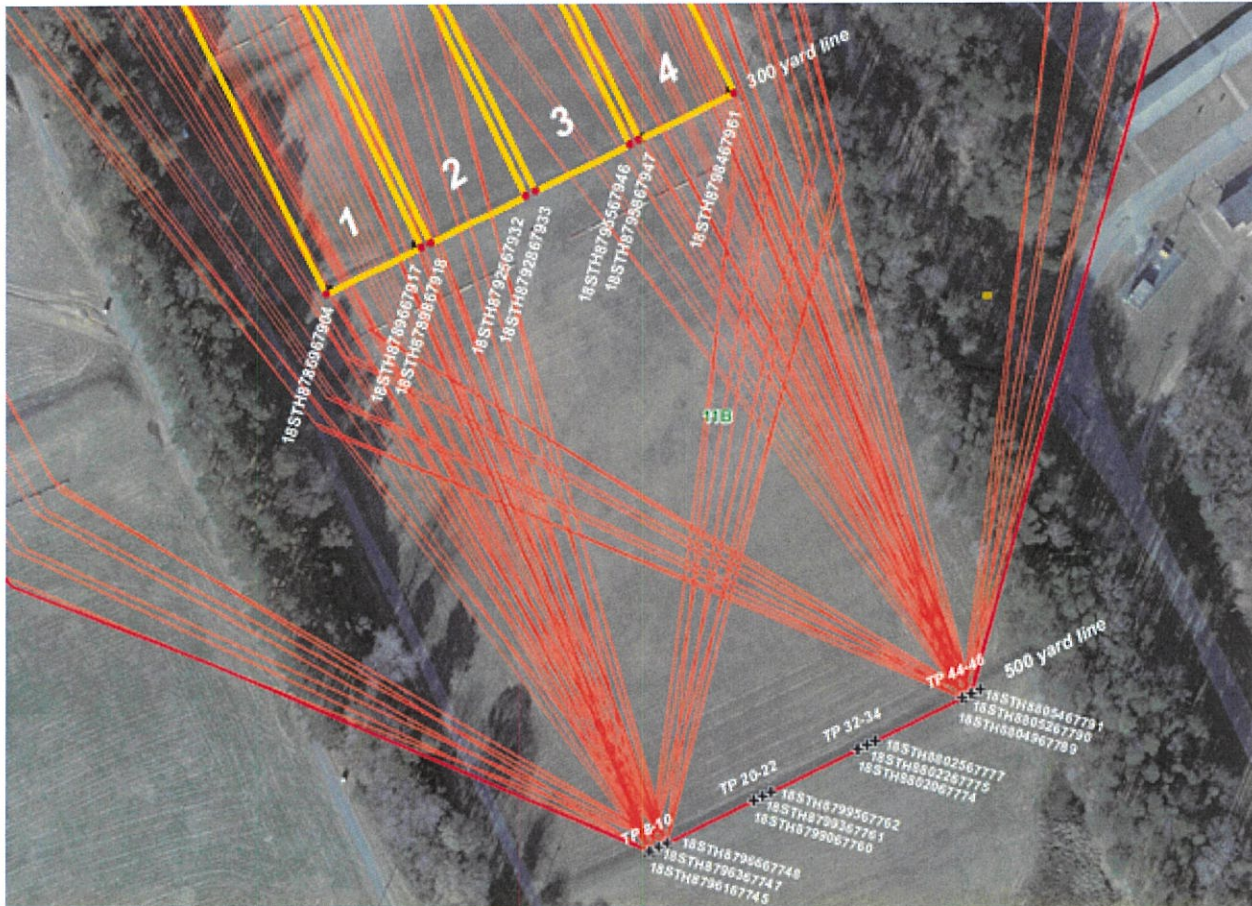


TMIT OP-BOX-2

- SHOOTERS MUST ENGAGE TMITs FROM THE CENTER OF EACH RESPECTIVE LANE ONLY.
- CENTER OF EACH LANE IS REFERENCED BY 3 KD TARGET NUMBER BOARDS.
- CENTERS: L1-TGTS 8-10, L2-TGTS 20-22, L3-TGTS 32-34, L4-TGTS 44-46.
- THIS IS THE ONLY AREA OF THE RANGE WHERE CROSSFIRE IS AUTHORIZED.
- CROSSFIRE IS LIMITED TO THE TMITs IN THAT LANE ONLY.
- CROSSFIRE IN MULTIPLE LANES IS PROHIBITED.
- TMITs ARE AUTHORIZED TO MOVE IN ANY SCENARIO THE TERRAIN ALLOWS INSIDE EACH LANE ONLY.
- USE OF PISTOLS IS NOT AUTHORIZED FOR CROSSFIRE.
- MINIMUM ENGAGEMENT DISTANCES MUST BE ADHERED TO.

Figure-2

TRACKLESS MOBILE INFANTRY TARGET (TMIT) OPERATING BOX-2 FIRING POSITIONS

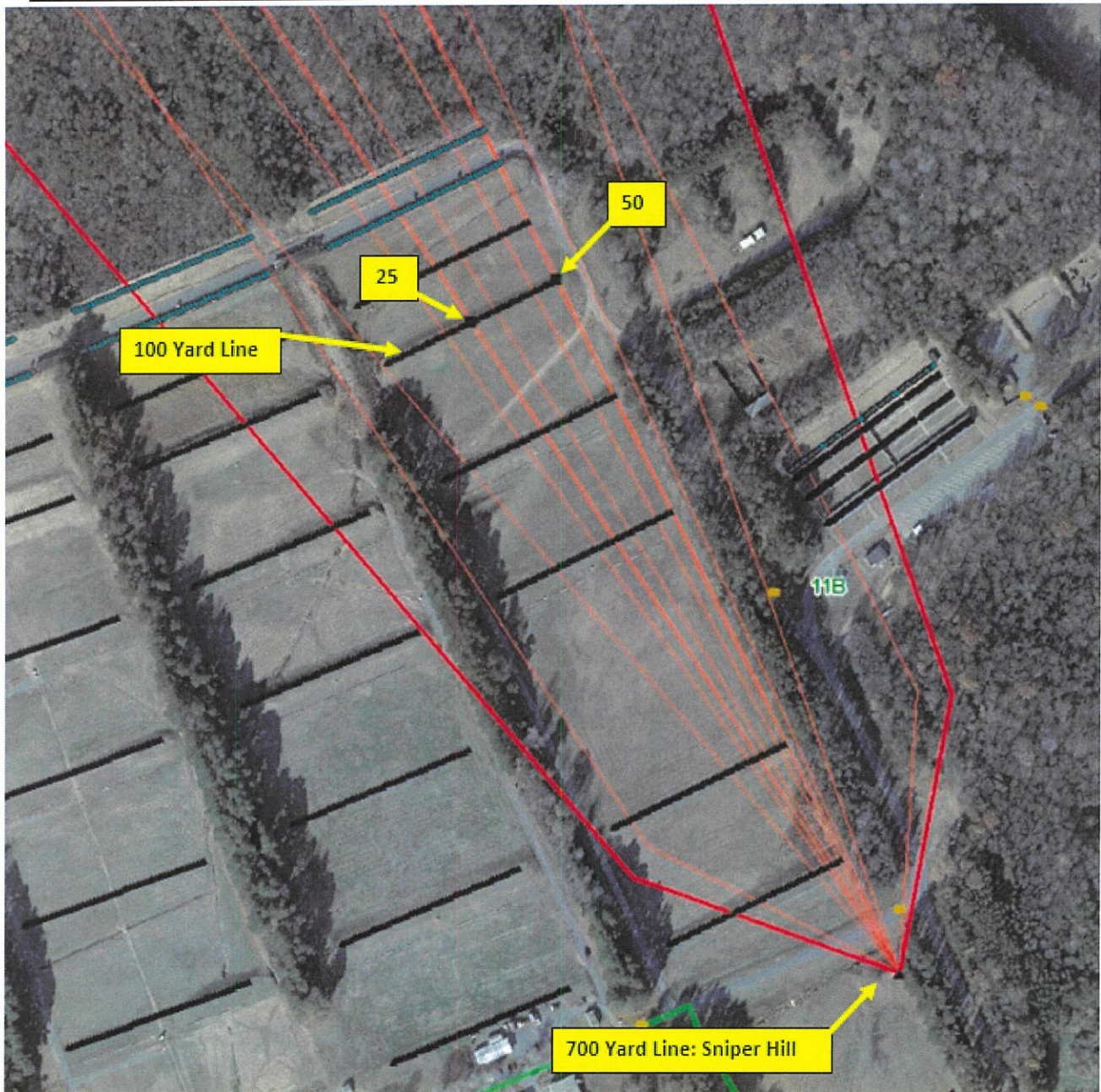


TMIT OP-BOX-2 FIRING POSITIONS

- SHOOTERS MUST ENGAGE TMITS FROM THE CENTER OF EACH RESPECTIVE LANE ONLY. REFERENCED BY KD FIRING POINTS.
- 500YD LINE FIRING POINTS SHOWN. HOWEVER TMITS MAY BE ENGAGED AS CLOSE AS THE MINIMUM ENGAGEMENT DISTANCES ALLOW OR AS FAR BACK AS THE 1000 YARD LINE.
- THIS IS THE ONLY AREA OF THE RANGE WHERE CROSSFIRE IS AUTHORIZED.
- CROSSFIRE IS LIMITED TO THE TMITS IN THAT LANE ONLY.
- CROSSFIRE IN MULTIPLE LANES IS PROHIBITED.
- TMITS ARE AUTHORIZED TO MOVE IN ANY SCENARIO THE TERRAIN ALLOWS INSIDE EACH LANE ONLY.
- USE OF PISTOLS IS NOT AUTHORIZED FOR CROSSFIRE.
- MINIMUM ENGAGEMENT DISTANCES MUST BE ADHERED TO.

Figure-3

TRACKLESS MOBILE INFANTRY TARGET (TMIT) OPERATING BOX-3 (SNIPERS)



TMIT OP-BOX-3 (SNIPER HILL)

- TMITS MUST ONLY OPERATE ON THE 100 YARD LINE AND MAY RUN Laterally BETWEEN FIRING POINTS 25-50 ONLY.
- SHOOTERS MUST ENGAGE TMITS FROM THE 700 YARD LINE BERM ONLY BUT MAY USE ANY PORTION OF THE FIRING LINE.
- THIS IS THE ONLY AREA OF THE RANGE WHERE CROSSFIRE IS AUTHORIZED.
- CROSSFIRE IS LIMITED TO THE TMITS IN THIS MANNER ONLY.
- CROSSFIRE ON MULTIPLE TMITS IS AUTHORIZED.
- TMITS ARE AUTHORIZED TO MOVE Laterally (LEFT-RIGHT/RIGHT-LEFT) ONLY IN THIS SCENARIO.
- TMITS MAY MOVE AT ANY SPEED IN THIS SCENARIO.
- USE OF PISTOLS IS NOT AUTHORIZED FOR CROSSFIRE.
- MINIMUM ENGAGEMENT DISTANCES MUST BE ADHERED TO.

Figure-4

GENERAL RANGE INFORMATION:

Number of Firing Points: 50

WEAPONS ACCOMMODATED: Detailed list is maintained in the Range Facility Management Support System (RFMSS).

- Service shotguns
- Service pistols
- Service rifles
- Sniper, competition and special application scoped rifles (SASR)
- Approved foreign weapons
- Approved pyrotechnics and illumination when fire conditions allow.
- Approved hand-held grenade launchers
- Approved R & D weapons
- Approved automatic rifles

AMMUNITION AUTHORIZED: Detailed list is maintained in the Range Facility Management Support System (RFMSS).

- Shotgun (All)
- Pistol (All)
- 5.56mm (All)
- 7.62mm X 51mm Ball
- 7.62mm X 51mm Special Ball (.308)
- 7.62mm X 67mm (.300 WinMag)
- 8.6mm X 70mm (.338 LaPua Magnum)
- 12.7mm X 99mm (.50 cal BMG ball)
- Approved foreign ammunition
- 40mm Grenade Illum
- Approved rifle team competition ammunition

TARGETS/SIMULATORS/DEVICES.

- Targets on Range 4 will be placed in the target carriages for KD firing.
- For short range engagements targets will be placed on line with the 100 yard firing line.
- Targets will be placed to ensure projectiles do not impact the protective berm and all impacts land between targets 1 and 50 of the impact berm.
- Targets are not authorized further up range than the 300 yard line without approval from Range Control.
- Targets are limited to paper, wood, plastic, approved ballistic steel reactive targets (SRT), and Trackless Mobile Infantry Targets (TMITS).
- Use of Clay targets is restricted to biodegradable only.
- SRTs must be minimum 3/8" thick AR-500 or greater steel.
- SRTs will not be engaged closer than 100m with 5.56mm or 7.62mm for targets provided by unit.
- EPR ammunition (M855A1/M80A1) is NOT authorized to be fired on SRTs, TMITs, or steel protective plates for Portable Infantry Targets (PITS).
- Contact Training Support Center (TSC) at (703)432-7026/7969 for target support or questions.

Minimum engagement distances for portable SRT:

-Pistol (non-magnum): 7 meters
-Shotgun (buck/bird): 10 meters
-Shotgun (slug): 50 meters
-5.56mm/.223 Ball/link: 150 meters for TSC targets
100 meters for unit-owned targets
-7.62mm Ball/linked: 150 meters for TSC targets
100 meters for unit-owned targets
-7.62mm Special Ball: 150 meters
-.300 WinMag Ball: 300 meters
-.338 LaPua Magnum: 300 meters

-Approved foreign weapons ammunition

-Pistol (non-magnum): 7 meters
-5.45mm: 150 meters for TSC targets
100 meters for unit-owned targets
-7.62mm Ball and linked: 150 meters for TSC targets
100 meters for unit-owned targets
-7.62mm x 54R: 150 meters for TSC targets
100 meters for unit-owned targets

Minimum engagement distances for Trackless Mobile Infantry Targets (TMIT):

-.300 WinMag: 300 meters
-7.62mm: 150 meters
-5.56mm (steel penetrator): 69 meters
-5.56mm (soft core): 23 meters
-Pistol calibers (non-magnum): NOT AUTHORIZED. GEOMETRY OF GUN-TARGET
LINES WILL EXCEED THE LIMITS OF THIS RANGE AND EXIT THE INSTALLATION.

ADDITIONAL RANGE INFORMATION:

PRIMARY DIRECTION OF FIRE. Northwest

SPECIAL INSTRUCTIONS/COMMENTS

1. All range regulations to include: MCO 3570.1, MCBO 3570.1B, all applicable SOUMs, and this SOP must be adhered to.
2. Cross-fire is prohibited on this range except where authorized for TMIT use.
3. All brass, trash, targets, and materials will be removed completely at the end of the training by the using unit. This includes any materials used to place targets on such as pallets.
4. Using unit will check-in with WTBn S-3/OOD and receive range brief prior to contacting Range Control and occupying the range.
5. Ensure range flags are posted, ear protection is worn (eye protection for SRTs and TMITs), safety brief is given, Range Control contacted and all fires are directed between the left and right lateral limits markers

(number boards 1 and 50). For night shooting a red strobe is located at the 600 yard line.

6. The only weapons and ammunition approved for use on this range are listed in this SOP. Detailed list is maintained in RFMSS. There shall be no deviation from or modification to the approved weapons and ammunition.

7. Movement in/out of the pit area must be coordinated with WTBn S-3/OOD via radio communication.

8. Personnel will only enter the pits when authorized by the OIC/RSO and WTBn S-3. Uncoordinated entry into the pits across Range 4 is prohibited: circumventing the locked gate at Check Point-7 is unsafe.

9. Fire and Movement or Fire and Maneuver are not authorized. The only exceptions are firing on the move to support the execution of the Marine Corps Combat Marksmanship Program (MCCMP) and plans for Marksmanship Matches approved by Range Control.

10. Procedures for firing on the move:

a. Movement will be restricted to walking straight forward, to the rear and simple button-hook techniques. Individual, Buddy Pair, Squad or Fire Team rushes are prohibited.

b. There will be no more than two shooters per instructor/safety supervisor moving at a time. (Example: 7 shooters = 4 instructor/safety supervisors).

c. There will be at least one target width separation between shooters.

d. Targets will be constructed from paper, plastic, or wood only when firing on the move.

e. Shooters will fire at no more than two targets to their direct front at a time while firing on the move.

f. Semi-auto only.

11. SRT, PITs, paper, and TMIT targets are authorized on Range 4 IAW SOUM 2-02 (SRT) and SOUM 8-20 (TMITS) with the following restrictions:

a. All targets must be placed on or down range of the 300 yard line.

b. Personnel on adjacent ranges must be physically up-range of the location of all targets.

c. Unit-owned SRTs can be engaged at 100 yards with 5.56mm or 7.62mm Special ball, and no closer. Targets issued by the Training Support Center (TSC) will be fired on IAW the minimum distances on pages (7/8).

d. TMITs will only be engaged IAW minimum safe distances set by SOUM 8-20 and Manufacturer Guidelines as outlined on page (8).

e. TMITs will only operate in the established Op-boxes shown in figures 1, 2, 3, and 4 of this SOP.

f. TMITs may move laterally, diagonally, or in-line with the shooter as outlined in each Op-Box.

g. Shooters must stay in the center of their established TMIT lane and only fire at the TMITs in that lane. Centers of each lane are referenced by a KD target number board down range and are as follows:

-OP-BOX-1 (single shooter, single TMIT per lane): Lane 1: Target 6, Lane 2: Target 12, Lane 3: Target 18, Lane 4: Target 24, Lane 5: Target 30, Lane 6: Target 36, Lane 7: Target 42, and Lane 8: Target 48.

-OP-BOX-2 (up to 4 shooters, multiple TMITs per lane): Lane 1: Targets 8-10, Lane 2: Targets 20-22, Lane 3: Targets 32-34, and Lane 4: Targets 44-46.

-OP-BOX-3 (multiple sniper teams, multiple TMITs): Any point along the available firing line at the top of the Sniper Hill at the 700 yard line only.

h. When engaging TMITs from the 700 yard line (Sniper Hill):
-Only TMIT lanes 5-8 will be engaged (target/firing points 25-50).
-TMITs must be on 100 yard line only as depicted in Figure-4.
-TMITs may only move laterally (left-right/right-left).
-TMITs may move at any speed.
-TMITs may utilize any portion of the width of lanes 5-8 as described in Figure-1 and Figure 4.
-Multiple TMITs may be used.

i. TMITs may be engaged from the 100 to the 1000 yard lines; the above restrictions apply at all distances.

12. For WTBN units/sections: The OIC and RSO will be physically present on the range at all times during live fire training and events. For multiple ranges/events in one unit/section, only one OIC is required, but must be physically located on one of the ranges (SAT Range excluded).

13. For external units: The OIC and RSO will be physically present on each range at all times during live fire training and events. For multiple ranges/events with external units, an OIC and RSO is required for each range, and must be physically located on each of those ranges.

14. The Officer-in-Charge (OIC) shall be the rank of Staff Sergeant or above and will be certified in accordance with all applicable regulations. The Range Safety Officer (RSO) shall be the rank of Sergeant or above and will be qualified in accordance with MCB Range Regulations. Neither the

OIC nor the RSO may participate in the live fire training they are responsible for until properly relieved by another and approved by the RCF.

15. There will be no personnel on adjacent ranges forward of any targets on Range 4.

a. Personnel on Range 4 cannot be forward of any static targets on Range 3 or either of the Pistol Ranges.

b. Personnel on Range 3 or either of the Pistol Ranges cannot be forward of any Range 4 targets placed between the protective berm and the 300 yard line.

16. Personnel will not occupy any portion of the SDZs unless they are protected by artificial barriers. Any personnel located in the pits will remain on the catwalk during firing.

17. Strict inter-range and intra-range coordination and communication will be exercised to ensure personnel are not exposed to direct and indirect weapons fire or ricochet hazards from Range 4 or any adjacent range.

18. When firing beyond the 600 yard line, the gates on Garand road must be closed and live-fire in progress signs posted. Additionally, a red flag must be flown at the gate flagpoles.

19. The following restrictions apply to firing large caliber rifles (.50, .300 or .338):

a. Ammunition .50 cal MK211 A606 is not authorized.

b. The firing of large caliber ammunition will only be done from between the 300 and 1000 yard lines.

c. Large caliber rifles will only be loaded and fired while in the prone position with bipod legs on the ground.

d. .338 LAPUA ammunition (DODIC AB97 or 300gr civilian equivalent) can only be fired from the 500 to 1,000 yard lines when firing points 1-50 are used. If restricted to firing points 1-25, the 300 yard line may be used. .338 IS NOT AUTHORIZED for any firing line closer than 300 yards.

e. .338 and .50 cal ammunitions are not authorized on SRT or TMIT targets. .300 is restricted to a distance of 300 meters on both.

20. Glass targets (Snipers) are authorized with the following restrictions:

a. All glass fragments/spalling will be completely removed from the range upon completion of training. This can be done by utilizing drop cloths/sheets.

b. For angled glass shots, the target will be positioned so that the gun-target line (the shot) is oriented straight down range.

c. Glass targets will be treated as SRTs in accordance with this SOP and SOUM 2-02; however, glass is authorized for approved .50 cal ammunition.

d. Glass will not be fired at less than 100 yds.

21. Automatic fire is not authorized on Range 4 unless specifically coordinated with Range Control and a scheme of maneuver with deliberate risk assessment submitted.

22. The following restrictions apply to Range 4 Rec Fire:

a. Only firearms with a distance x (maximum range) of 6500m (.50cal M2 ball) or less will be fired (unless .300 MK248 MOD 1 or .338 are anticipated).

b. If .300 MK248 MOD 1 or .338 are anticipated for Rec Fire, then they will be specifically scheduled with Range Control and no firearms with greater distance x of .300 MK248 MOD 1 (6294m) or .338 (6833m) can be fired.

23. When rifle team training or competition matches are being conducted, and specialized calibers below .300 MK248 MOD 1 cal are being used, a MK248 MOD 1 .300 SDZ (Dist X 6294m) will be utilized.

24. For the Interservice Opening Shot, all procedures will be in accordance with the Interservice Rifle Match Opening Shot Ceremony Certification dated 01 Jul 2010. It is included as part of the WTBN Range 4 certification.

25. Units that have requested contractor support (i.e., automated targets, PITS targets, battlefield effects simulators, etc.) that are not present on the specified range within 1 hour of the requested time and have not contacted RMB/TSCQ will forfeit all contracted support for the day.

26. Units that have occupied a range with approved contractor support (i.e., automated targets, PITS targets, battlefield effects simulators, etc.) and that have not begun to use that support within 2 hours of the requested hour of operation will forfeit all contracted support for the day.

27. Units that are training with contractor support (i.e., automated targets, PITS targets, battlefield effects simulators, etc.) that place

themselves voluntary into check fire for 2 hours during the approved support operational hours will forfeit all support for the day.

28. Units that encounter situations where contractor support (i.e., automated targets, PITS targets, battlefield effects simulators, etc.) is delayed or interrupted by circumstances beyond the control of the requesting unit (i.e., RMB directed check fire, ASP support, MEDEVAC, etc.) must contact RMB/TSCQ in order to arrange continued support within the scope of the contract and available assets.

29. For events including battle effect simulators, the OIC and RSO will be trained on those systems in addition to the system operators.

APPLICABLE MAP SHEET. All grid coordinates listed in this order apply to the Quantico Military Installation Map V834S Edition 5-NGA 1:25000.

FACILITIES

Towers: 0

Bleachers: 0

Sheds: 2

Ammo Breakdown table: 1

Parking: Limited

UTILITIES AVAILABLE

Electricity: Yes

Lights: No

Water System: No

INSTALLED COMMUNICATIONS. PA

Nearest MEDEVAC Landing Zones (LZ) MILES

LZ-9 0 8820067600 (Range 4)

Directions: LZ located between Garand Road and 700 yd line (see photos).

LASERS AUTHORIZED: Class 1 - 3R. Standard aiming devices mounted on approved service rifles. Class 3B can be fired if safety filter is on, reducing power output.

COMMUNICATION REQUIREMENTS:

1. A radio check is required immediately upon occupying any portion of the RTA, every 30 minutes in a live fire status and every 3 hours in a non-live fire status.

2. The Range Control Facility (RCF) Fire Desk Net Control call sign is "Range Control". Your call sign is "**RANGE 4**" (name of range, training area or facility unit is occupying).

3. The primary RCF Fire Desk Net Control frequencies are: ELMR talk group "RC Safety" (ground) and 323.7 AM UHF (air).

4. The secondary RCF Fire Desk Net Control is telephone, numbers: 703-784-5321 or 5322.
5. OIC/RSO will monitor the RCF primary and secondary Safety Nets at all times. Instant communication is required.
6. Any unit with organic ELMR radios will have their ELMR radios programmed with the "RC Safety" talk group and use those radios as their primary means of communication within the RTA.
7. Units without organic ELMR assets will be issued ELMR radios from RMB upon check-in.
8. Approved Non-ELMR radios are only authorized for internal communication (ground).
9. If the RCF cannot reach a unit within the RTA via primary communication, the unit will be contacted via the secondary means of communication.
10. Upon loss of primary communication the OIC/RSO will initiate a "check fire"/cease training status and will contact the RCF via secondary communication. This communication will be maintained while primary communication is being restored. Units may only resume firing/training once primary communication has been re-established and clearance is granted by the RCF.

INJURY CLASSIFICATIONS:

Injuries are classified into the following categories in order to aid in casualty evacuation from the RTA.

1. ROUTINE. Routine injuries are those injuries that are not threatening to life, limb or eyesight; and conditions or illnesses treatable by medication or procedures available at the base medical facilities.
2. PRIORITY. Priority injuries are those injuries that require immediate medical attention but are not threatening to life, limb, or eyesight if treated promptly.
3. URGENT. Urgent injuries are severe injuries that are threatening to life, limb, or eyesight and require immediate medical attention.
4. MASS CASUALTY. A mass casualty is a series of injuries with multiple priority and urgent medical patients.

MEDICAL EVACUATION (MEDEVAC) PROCEDURES:

1. Injury occurs.
2. Range immediately cease-fires.
3. OIC/RSO notifies S-3/OOD of injury.
4. S-3/OOD dispatches Corpsman and safety vehicle.
5. Medical support evaluates/treats injured personnel.

6. OIC/RSO immediately notifies the RCF of the injury, stating briefly what happened, the extent of the injury and what type of MEDEVAC transportation needed (ground/air).

7. Maintain constant radio contact with Range Control and await further instructions.



INSTALLATION RANGE SAFETY OFFICER

DATE: 10/26/2022